

ceConnect Windows Driver Installation

After plugging the ceConnect in, Windows will try – and fail – to search the Internet for drivers.

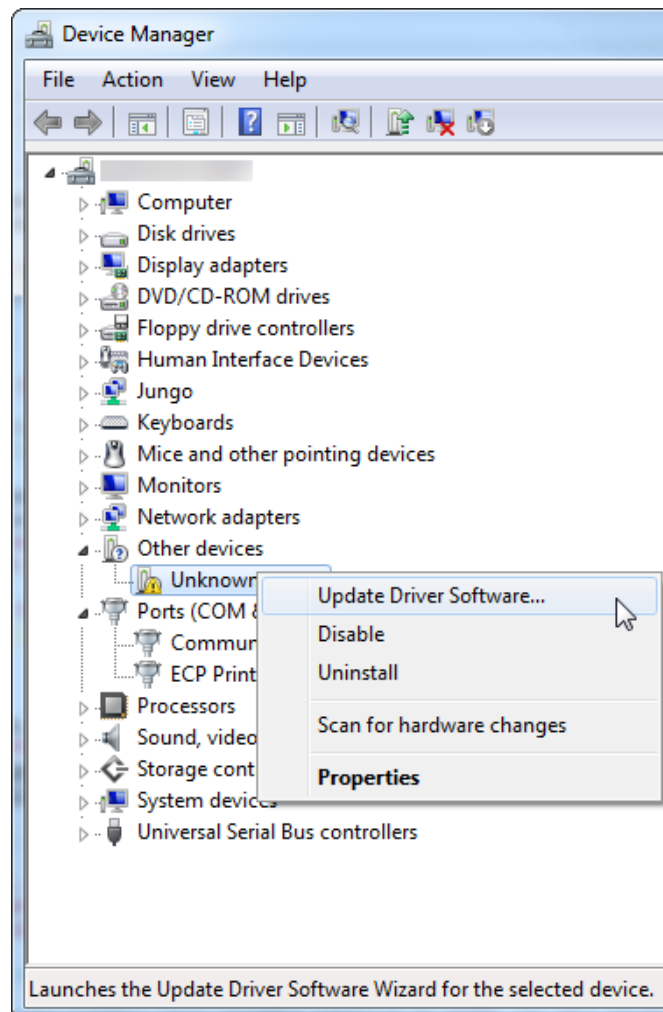
Download the drivers: [SparkFun-SAMD21-Driver-111115.zip](#)

Then follow the steps below to install the drivers:

1. After downloading, **extract the ZIP folder** and copy down the location of the sparkfun.inf and sparkfun.cat files.
2. **Open your Device Manager**
 - o In Windows 8 or 10, simply search for "Device Manager" and select the Windows app
 - o See Window's resources for [Windows 7](#).
 - o (Start > Run > "devmgmt.msc", should work on almost any version of the OS.)
3. In the Device Manager, expand the **"Other devices" tree** -- you should see an entry for "Unknown Device", **Right-click and select Update Driver Software...**

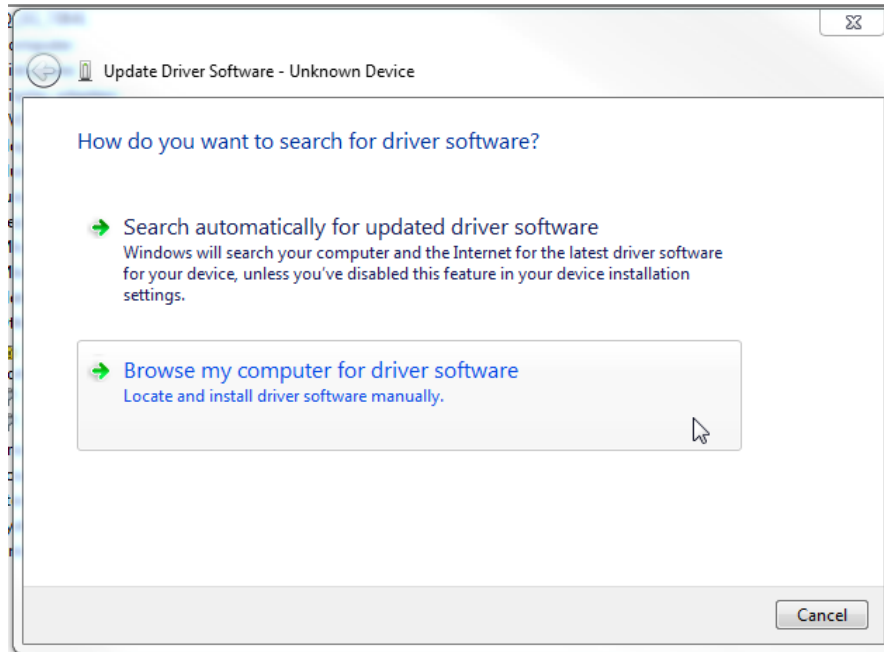
(In case of Windows finds a serial communication driver to the device, then instead of the „Other devices” tree you will find it in the „Ports” tree)

Screenshot: Navigating the Device Manager



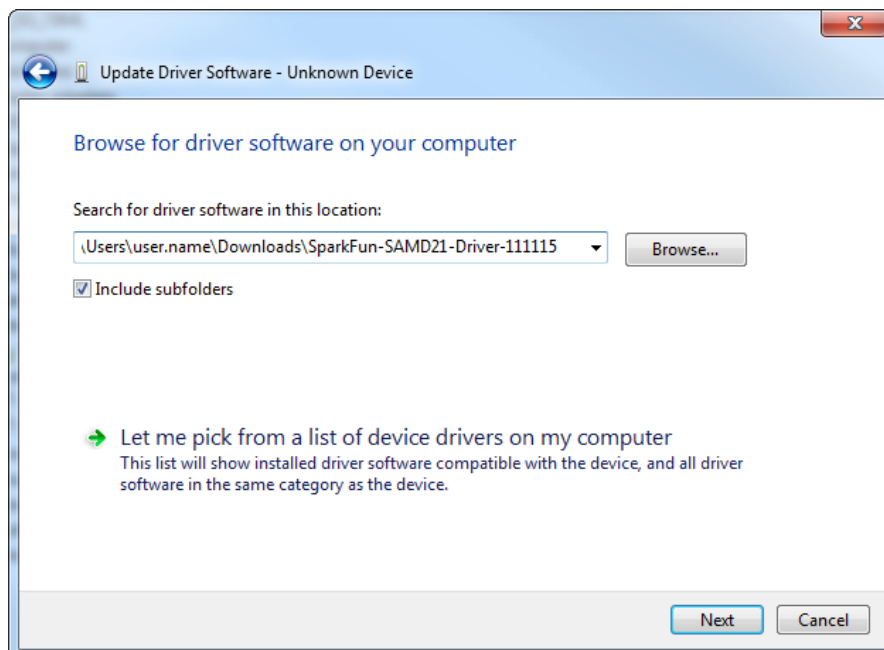
4. Select **Browse my computer for driver software**. On the next screen

Screenshot: Browse your computer for the driver



5. **Paste the directory location** of your sparkfun.inf and sparkfun.cat files into the search location. Then hit "Next".

Screenshot: Setting the driver location



6. **Click "Install"** when the next pop-up questions if you want to install the driver.
7. The driver installation may take a moment, when it's done you should be greeted with a "successfully updated your driver software" message!